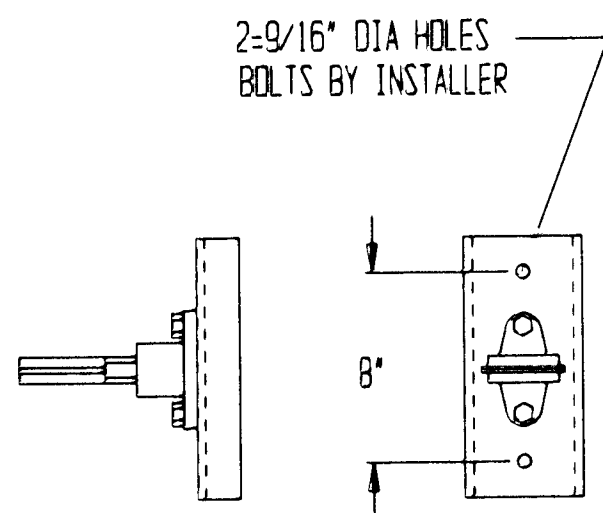
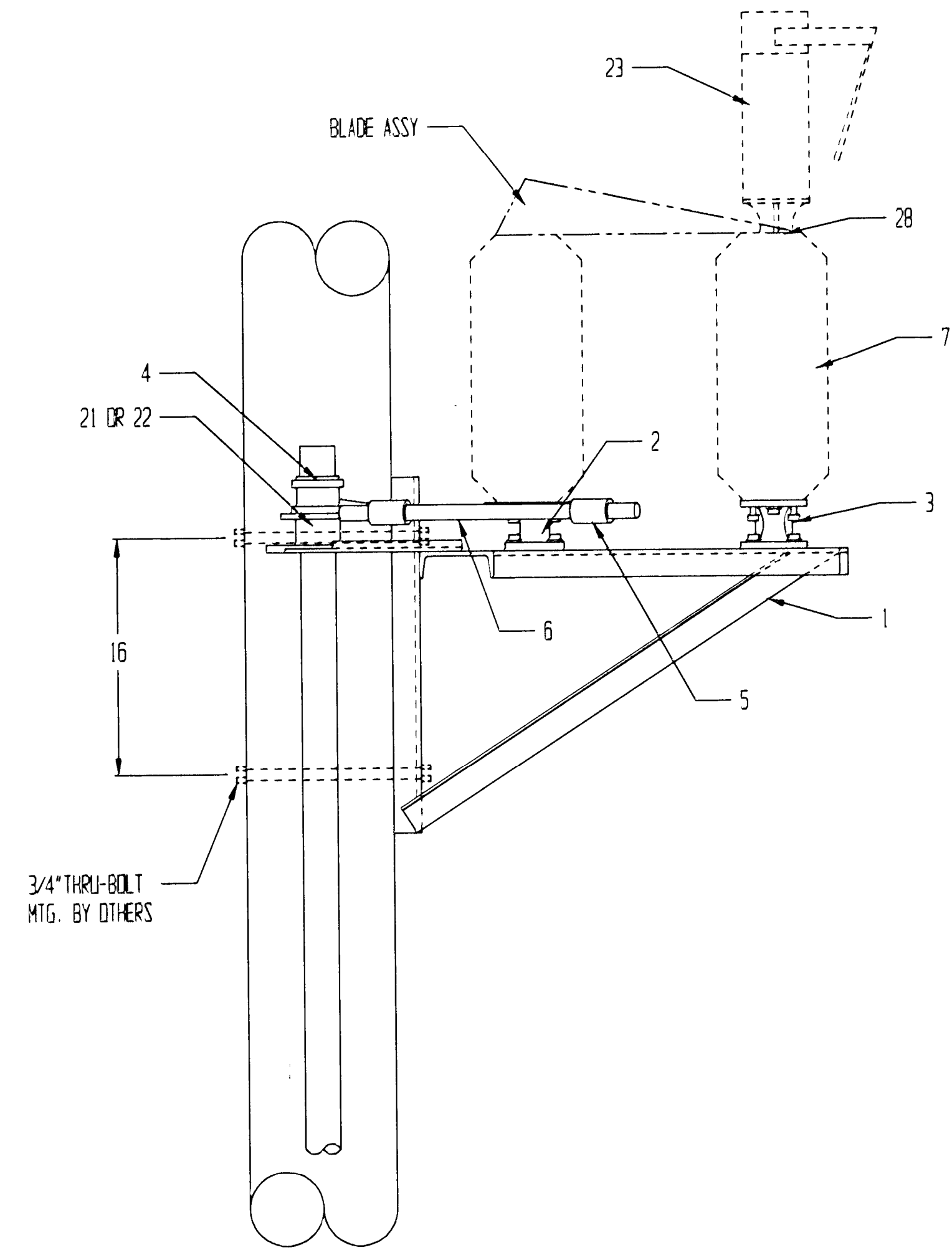
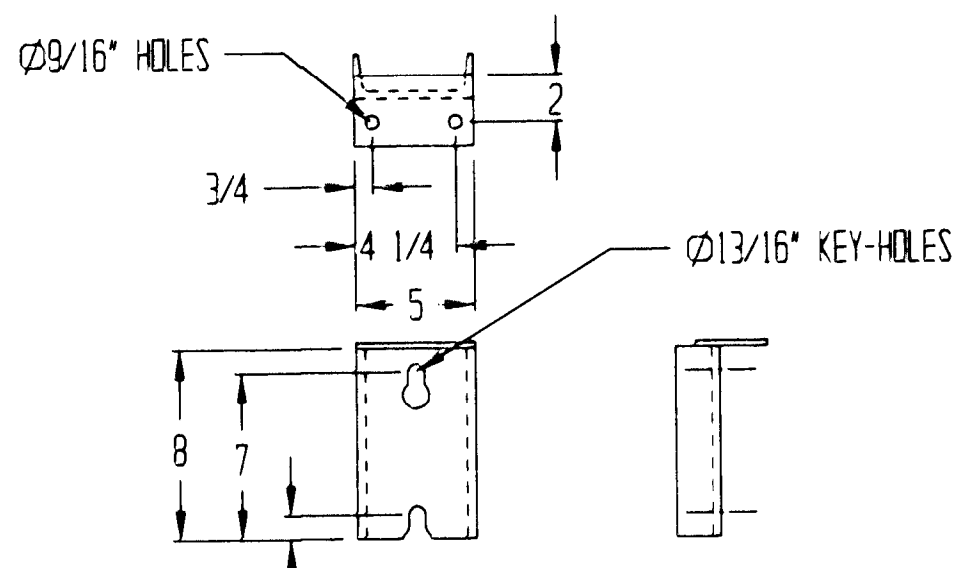


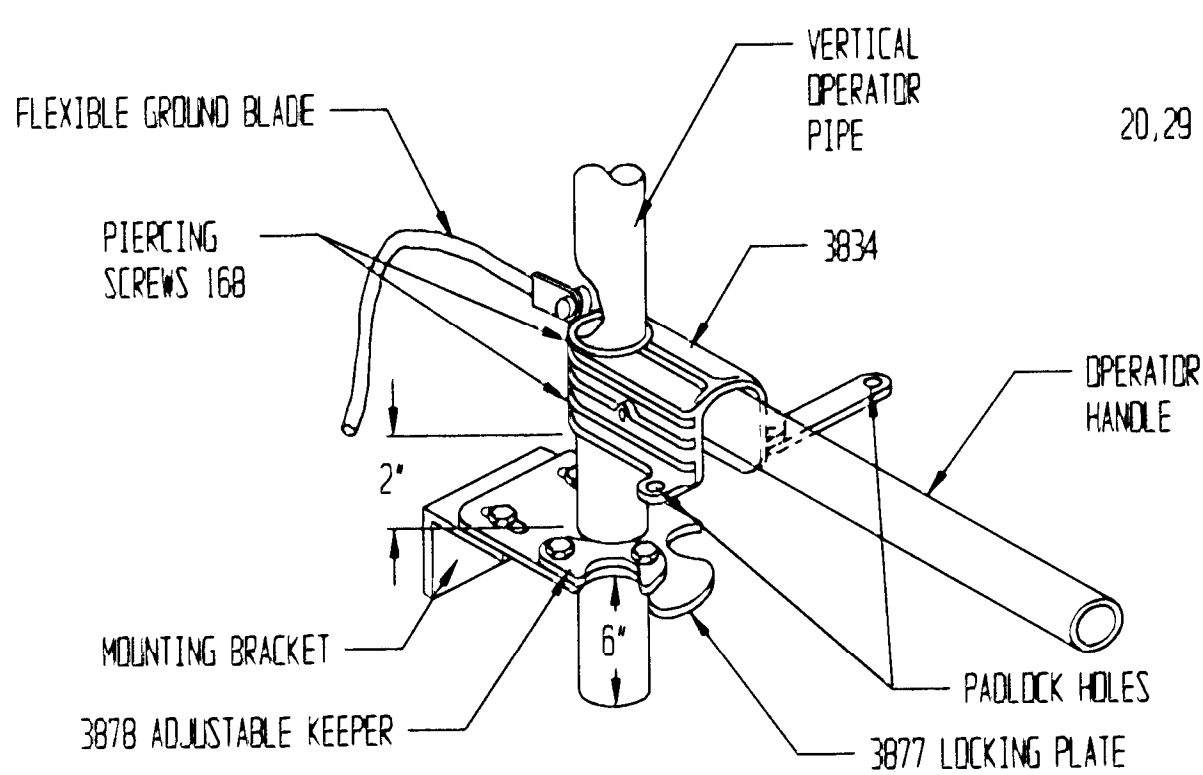
NOTES:
 A- STANDARD NEMA PIN AND CAP OR STATION POST INSULATORS ON A 3" BOLT CIRCLE
 B- CONNECTORS CAN BE SUPPLIED UPON REQUEST.
 C- SUGGESTED POLE CLASS POLE SIZES FOR SWITCH MTG. ARE CLASS 1 OR 2.
 D- FRAMES ARE WELDED FROM STRUCT. ALUM. 6061-T6



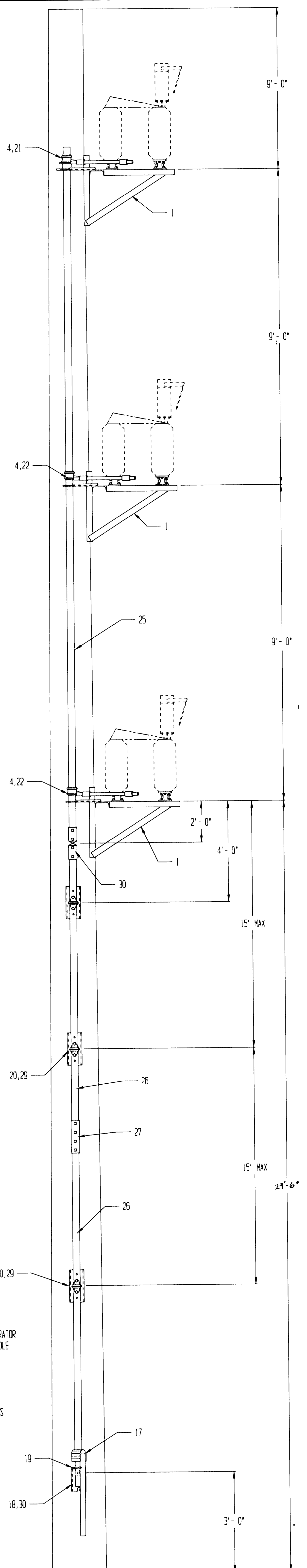
(20) PIPE GUIDE MTG BRKT DETAIL



(18) OPER MTG BRKT DETAIL



(17) OPERATOR HANDLE DETAIL



QUANTITY	PART	MATERIAL	ITEM	DESCRIPTION
1	A9277	-	30	U-JOINT ASSY
*	007231AX	ALUM	29	PIPE GUIDE MTG BRKT. (VARIES w/ POLE HEIGHT)
3	A2354	ALUM	28	CONTACT PLATE
*	A9259	GALV	27	2" PIPE COUPLING (VARIES w/ POLE HEIGHT)
*	RM301380	GALV	26	2" SCH.40 OPER PIPE (VARIES w/ POLE HEIGHT)
2	RM301380	GALV	25	2" SCH.40 OPER PIPE @ 21'-0"
2	003698S/G	-	24	T.B. MTG BRKT
3	-	-	23	INTERRUPTER (OPTIONAL)
4	A9251	-	22	PHASE GUIDE
2	A9247	ALUM	21	T-BEARING ASSY
*	A9257	-	20	PIPE GUIDE ASSY (VARIES w/ POLE HEIGHT)
2	A9269	ALUM	19	LOCKING PLATE ASSY
2	003879AX	ALUM	18	OPERATOR MTG BRKT
1	A9284	GALV	17	2-WAY OPERATOR HANDLE ASSY
3	A9573	-	16	34KV 1200AMP LH JAW ASSY
3	A9572	-	15	34KV 1200AMP RH JAW ASSY
3	A9555	COPPER	14	34KV 1200AMP LH BLADE ASSY
3	A9554	COPPER	13	34KV 1200AMP RH BLADE ASSY
-	A9523	-	12	34KV 600AMP LH JAW ASSY
-	A9522	-	11	34KV 600AMP RH JAW ASSY
-	A9505	COPPER	10	34KV 600AMP LH BLADE ASSY
-	A9504	COPPER	9	34KV 600AMP RH BLADE ASSY
-	-	-	8	-
9	-	-	7	INSULATOR
6	RM301280	GALV	6	3/4" SCH.40 REACH ROD @ 30"
12	A9252	GALV	5	3/4" CLEVIS ASSY
6	A9255	GALV	4	7" PIPE LEVER ASSY
3	000967SD/MGM	GALV	3	STATIONARY PEDESTAL
6	A9233	ALUM	2	1 LEVER PIVOT ASSY (3=483 (RH), 3=429 (LH))
3	A9334-1	ALUM	1	20-34 FRAME ASSY (LD SP)

1200 AMP	600 AMP	TO:	
		CUSTOMER P.O.#	SERIAL NUMBER:
REVISIONS	DATE	BY	MARK
DRAWING #	BY	DATE	
SK011120	MB	11-14-01	
SHEET 1 OF 1	APP'D BY	DATE	
	LS	11-19-01	
34 KV 2003406/2196 600/1200 AMP 2003412/2196 MTD ON LD STEEL POLE TURNER ELECTRIC CORPORATION FAIRVIEW HEIGHTS, IL., USA			