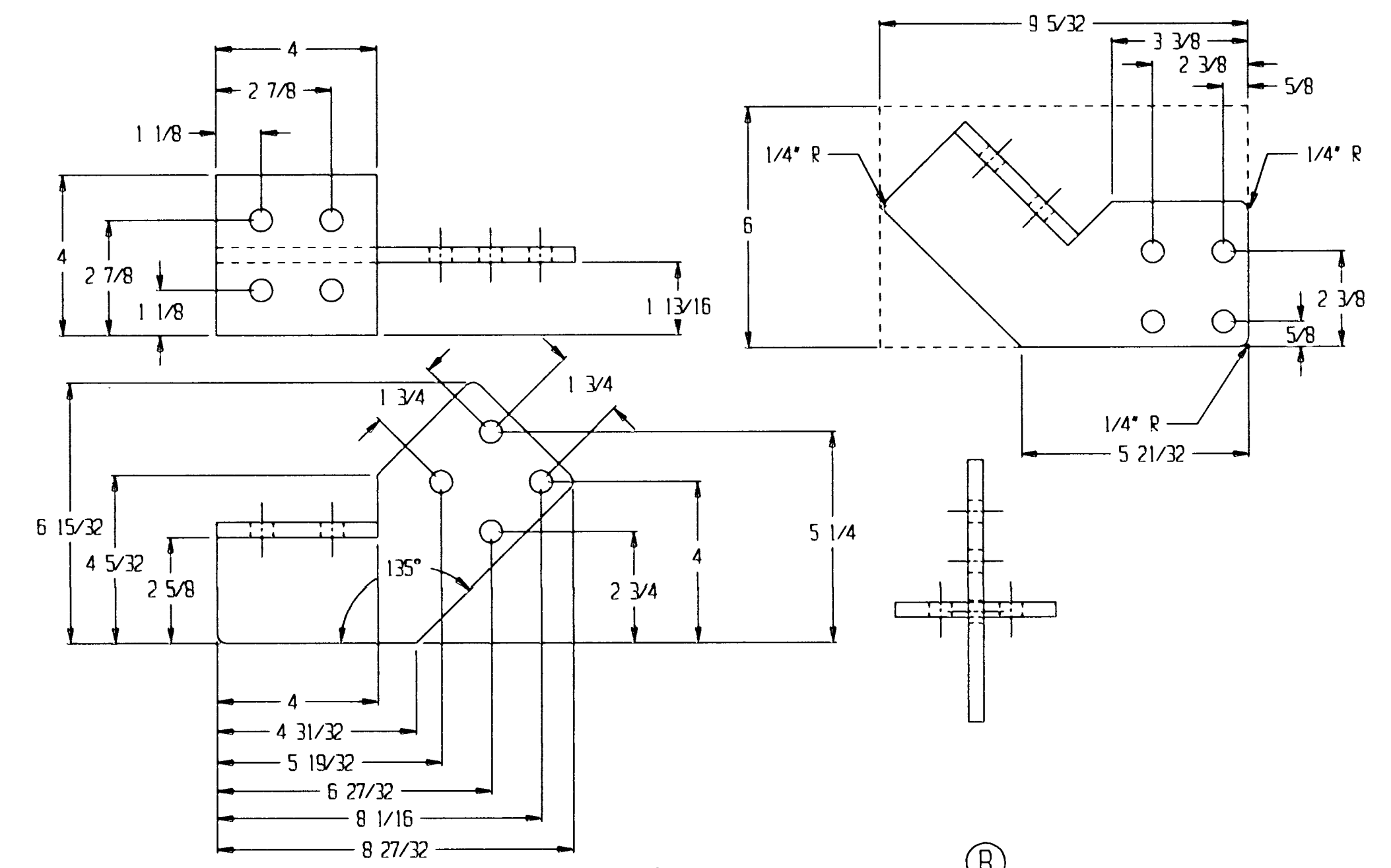


NOTES: 1. FOR CORRECT CONTACT PRESSURE ON CLIP, ADJUST BLADES SO THEY ARE .013 ± .004" WIDER IN THE CLOSED POSITION THAN IN THE OPEN POSITION. THIS DIMENSION MUST BE MEASURED ON THE OUTSIDE OF THE BLADES, ABOVE CONTACT POINTS

2. LUBRICATE CONTACT SURFACES PER SPEC

3. SILVER SOLDER NUTS AT ASSY



⑧ PAD ADAPTER ⑧

				12	-
	2	-	-	11	DRIVE SCREW
	1	009509SXQ	GALV	10	SWITCH BASE 7" X 9" MTG (OPTIONAL)
Ⓐ	8	-	GALV	9	MACHINE BOLT 1/2"-13 * 1 3/4"
Ⓐ	2	009419AX	ALUM	8	PAD ADAPTER
	1	007944XT	H.H. CL.	7	BACKUP PLATE
	1	MP251800X	ALUM	6	NAMEPLATE
	8		GALV	5	LOCKWASHER 1/2"
	8		GALV	4	BOLT 1/2-13 * 1"
	2			3	INSULATOR TR208
	1	A009643		2	CURRENT CARRYING PARTS ASSY
	1	007794SX	STEEL	1	SHIPPING BRACKET

QUANTITY	PART	MATERIAL	ITEM	DESCRIPTION
TD: -				
CUSTOMER P.O.# -				SERIAL NUMBER: 6065-
REVISIONS	DATE	BY	MARK	23kv
ADDED DIMS 8,9 W/ DIMENSIONS	1/94	LD	A	1200 AMP
ADDED DETAIL OF PAD ADAPTER	11-3-98	BM	B	BT2S-23-12/6065 HOOKSTICK
REV BLADE DETAIL; ECN 3276	11-12-02	MJR	C	VERT. W/90 DEG INSULATOR MTG
DRAWING #	BY	DATE		
SK931228	LYNN D	12-23-93		
SHEET 1 OF 1	APP'D BY	DATE		
	WSD	11-14-02		

TURNER ELECTRIC CORPORATION  
FAIRVIEW HEIGHTS, IL., USA